

Parkheath

Sold on Service

Lynton Road NW6
£2,500 PCM (£577 per week) - Brent Band D

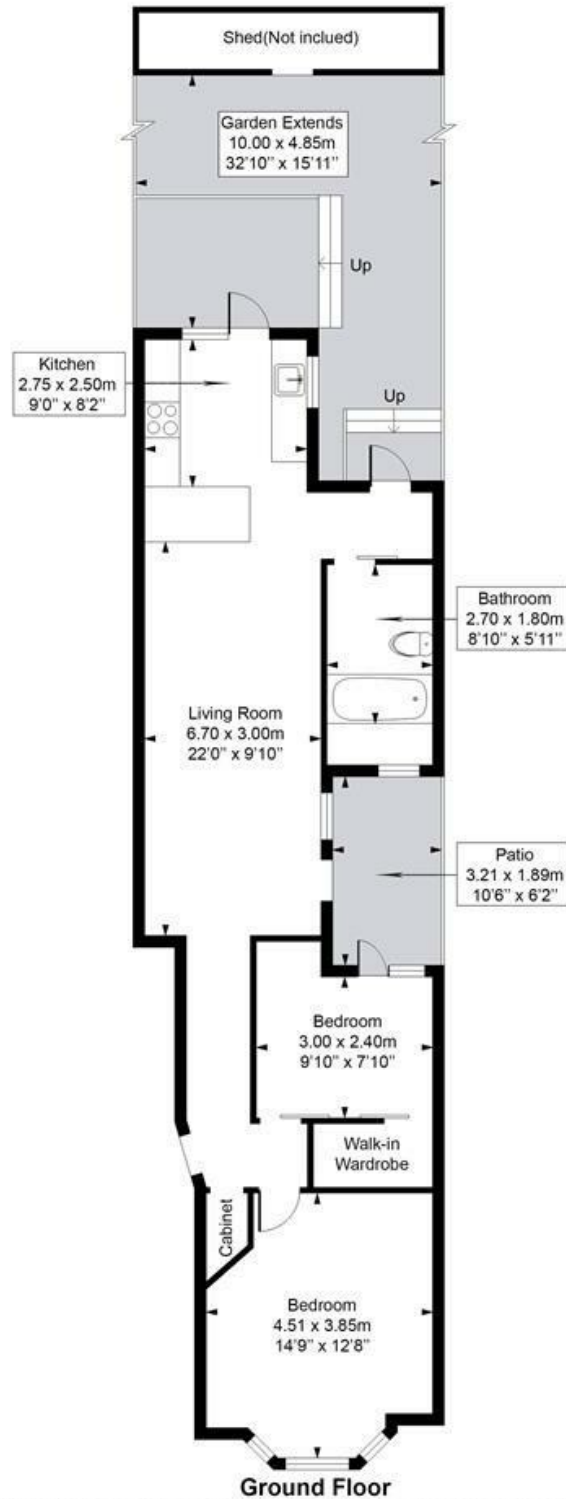


Excellent 2 bedroom apartment
Large private garden (summer house not included)
Contemporary family bathroom
Second bedroom with walk-in wardrobe
Short walk to both Queen's Park (Bakerloo and Overground) & Brondesbury Park (Overground) stations

Ground floor within period conversion
Reception/dining room with open plan fitted kitchen
Large main bedroom with fitted wardrobe and shelves
Underfloor heating

Kensal Rise Office 0208 960 4845

Lynton Road
Approximate Gross Internal Area = 72 Sq m / 770 sq ft



Ground Floor

This plan is for layout guidance only. Drawn in accordance with RICS guidelines. Not drawn to scale unless stated. Windows & door openings are approximate. Whilst every care is taken in the preparation of this plan, please check all dimensions, shapes & compass bearings before making any decisions reliant upon them.

ELLIE CLAIRE PHOTOGRAPHY LTD
www.ellieclairephotography.com

The particulars do not constitute part of an offer or contract. The particulars, including text, photographs and plans, are for the guidance only of prospective purchasers/tenants and must not be relied upon as statements of fact. The descriptions provided therein represent the opinion of the author and whilst given in good faith should not be construed as statements of fact. Nothing in these particulars shall be deemed a statement that the property is in good condition or otherwise or that any services or facilities are in good working order. All measurements are approximate